



South Carolina Data Trends: September 2025

The South Carolina Department of Employment and Workforce, through its Labor Market Information (LMI) Division, summarizes the latest workforce data trends as of September 2025, providing key insights into employment and wages for the state and each of its metro areas. For questions or additional information, please contact the LMI Division at lmicustomerservice@dew.sc.gov.

Table 1. Labor Market Snapshot

Metric	September 2025	MoM Δ (#)	YoY Δ (#)
Unemployment	113,929	+3,218	-1,944
Employment	2,468,922	+4,102	+33,391
Labor Force	2,582,851	+7,320	+31,447

Source: Bureau of Labor Statistics, Local Area Unemployment Statistics. Note: Current month's estimates are preliminary. All data are subject to revision. Estimates are seasonally adjusted. MoM = Month-over-Month. YoY = Year-over-Year. Δ (#) = Absolute Change.

Table 2. Nonagricultural Employment by Industry, Seasonally Adjusted

Industry	September 2025	MoM Δ (#)	MoM Δ (%)	YoY Δ (#)	YoY Δ (%)
Total Nonfarm	2,420,800	-4,700	-0.2	+54,300	+2.3
Construction	122,800	-600	-0.5	+4,100	+3.5
Manufacturing	261,100	-2,500	-0.9	-2,900	-1.1
Trade, Transportation, and Utilities	453,100	+2,400	+0.5	+5,900	+1.3
Information	30,000	-200	-0.7	+1,500	+5.3
Financial Activities	126,700	-500	-0.4	+3,500	+2.8
Professional and Business Services	327,200	-1,600	-0.5	+12,500	+4.0
Private Education and Health Services	314,900	-300	-0.1	+10,600	+3.5
Leisure and Hospitality	294,300	+200	+0.1	+12,200	+4.3
Government	392,900	-1,400	-0.4	+4,800	+1.2
Other Services	93,200	-200	-0.2	+1,900	+2.1

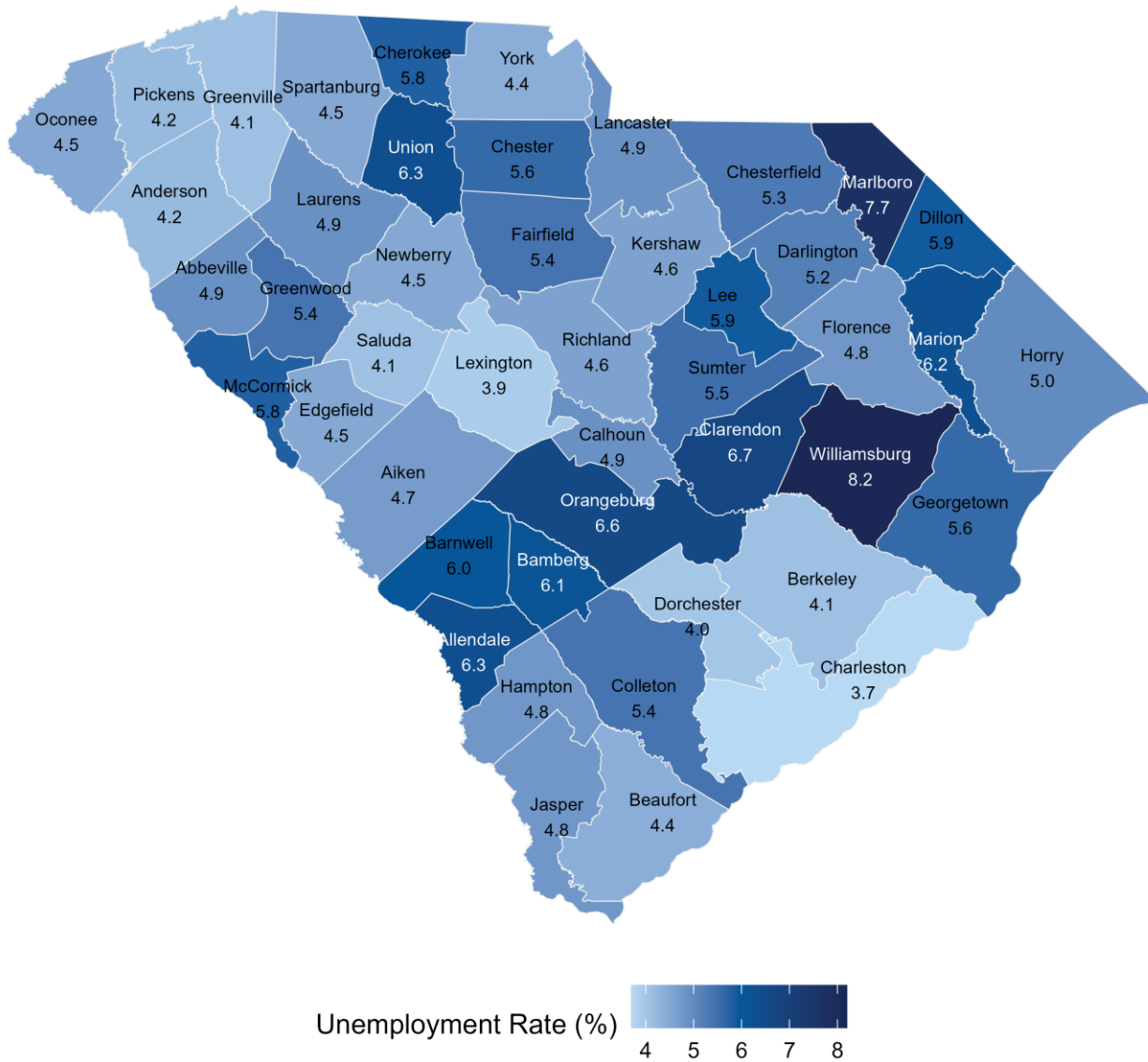
Source: Bureau of Labor Statistics, Current Employment Statistics. Note: Current month's estimates are preliminary. All data are subject to revision. MoM = Month-over-Month. YoY = Year-over-Year. Δ (#) = Absolute Change. Δ (%) = Percent Change.

Table 3. Nonagricultural Employment by Metropolitan Statistical Area, Seasonally Adjusted

Area	September 2025	MoM Δ (#)	MoM Δ (%)	YoY Δ (#)	YoY Δ (%)
Statewide	2,420,800	-4,700	-0.2	+54,300	+2.3
Charleston/North Charleston	435,300	-1,400	-0.3	+10,600	+2.5
Columbia	439,600	-300	-0.1	+5,100	+1.2
Florence	99,100	-300	-0.3	+2,800	+2.9
Greenville/Anderson/Mauldin	477,200	-200	-0.0	+3,900	+0.8
Hilton Head Island-Bluffton-Beaufort	91,200	+900	+1.0	+2,200	+2.5
Myrtle Beach	162,100	0	0.0	+8,700	+5.7
Spartanburg	181,700	+200	+0.1	+4,400	+2.5
Sumter	39,200	0	0.0	+1,900	+5.1

Source: Bureau of Labor Statistics, Current Employment Statistics. Note: Current month's estimates are preliminary. All data are subject to revision.
 MoM = Month-over-Month. YoY = Year-over-Year. Δ (#) = Absolute Change. Δ (%) = Percent Change.

Figure 1. Unemployment Rate by County, Not Seasonally Adjusted



Source: Bureau of Labor Statistics, Local Area Unemployment Statistics.

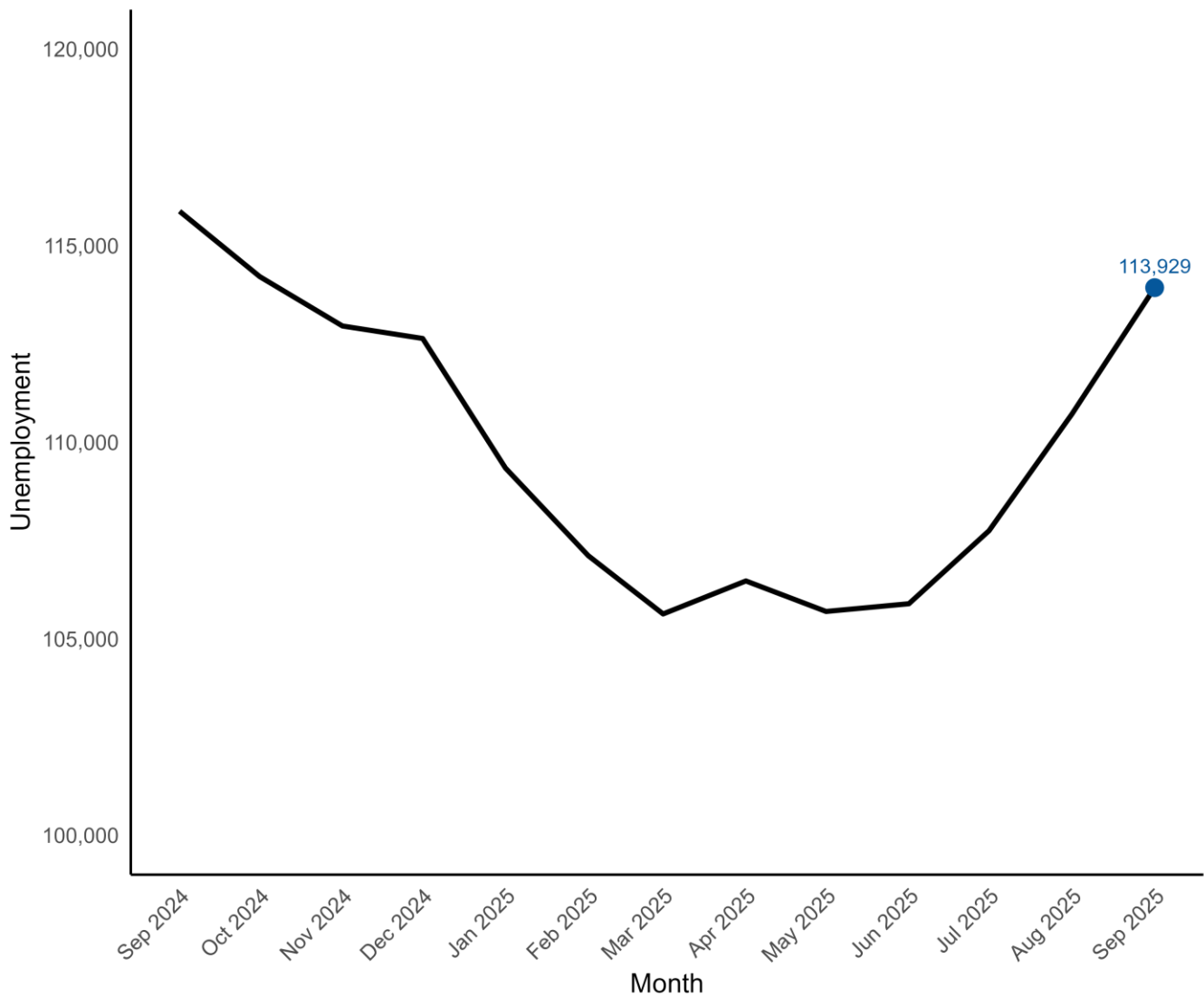
Table 4. Unemployment Estimates by County, Not Seasonally Adjusted

County	Labor Force	Employment	Unemp. Level	Unemp. Rate
Abbeville	10,439	9,930	509	4.9
Aiken	77,365	73,731	3,634	4.7
Allendale	2,658	2,491	167	6.3
Anderson	101,351	97,064	4,287	4.2
Bamberg	5,403	5,074	329	6.1
Barnwell	7,980	7,501	479	6.0
Beaufort	86,415	82,586	3,829	4.4
Berkeley	131,271	125,911	5,360	4.1
Calhoun	6,710	6,383	327	4.9
Charleston	237,489	228,622	8,867	3.7
Cherokee	23,548	22,177	1,371	5.8
Chester	14,801	13,971	830	5.6
Chesterfield	18,731	17,739	992	5.3
Clarendon	11,889	11,089	800	6.7
Colleton	15,914	15,062	852	5.4
Darlington	29,146	27,630	1,516	5.2
Dillon	12,414	11,683	731	5.9
Dorchester	87,983	84,444	3,539	4.0
Edgefield	11,820	11,291	529	4.5
Fairfield	10,052	9,508	544	5.4
Florence	66,094	62,904	3,190	4.8
Georgetown	27,976	26,406	1,570	5.6
Greenville	289,141	277,393	11,748	4.1
Greenwood	28,938	27,375	1,563	5.4
Hampton	7,916	7,539	377	4.8
Horry	179,122	170,181	8,941	5.0
Jasper	14,461	13,770	691	4.8

Table 4. Unemployment Estimates by County, Not Seasonally Adjusted

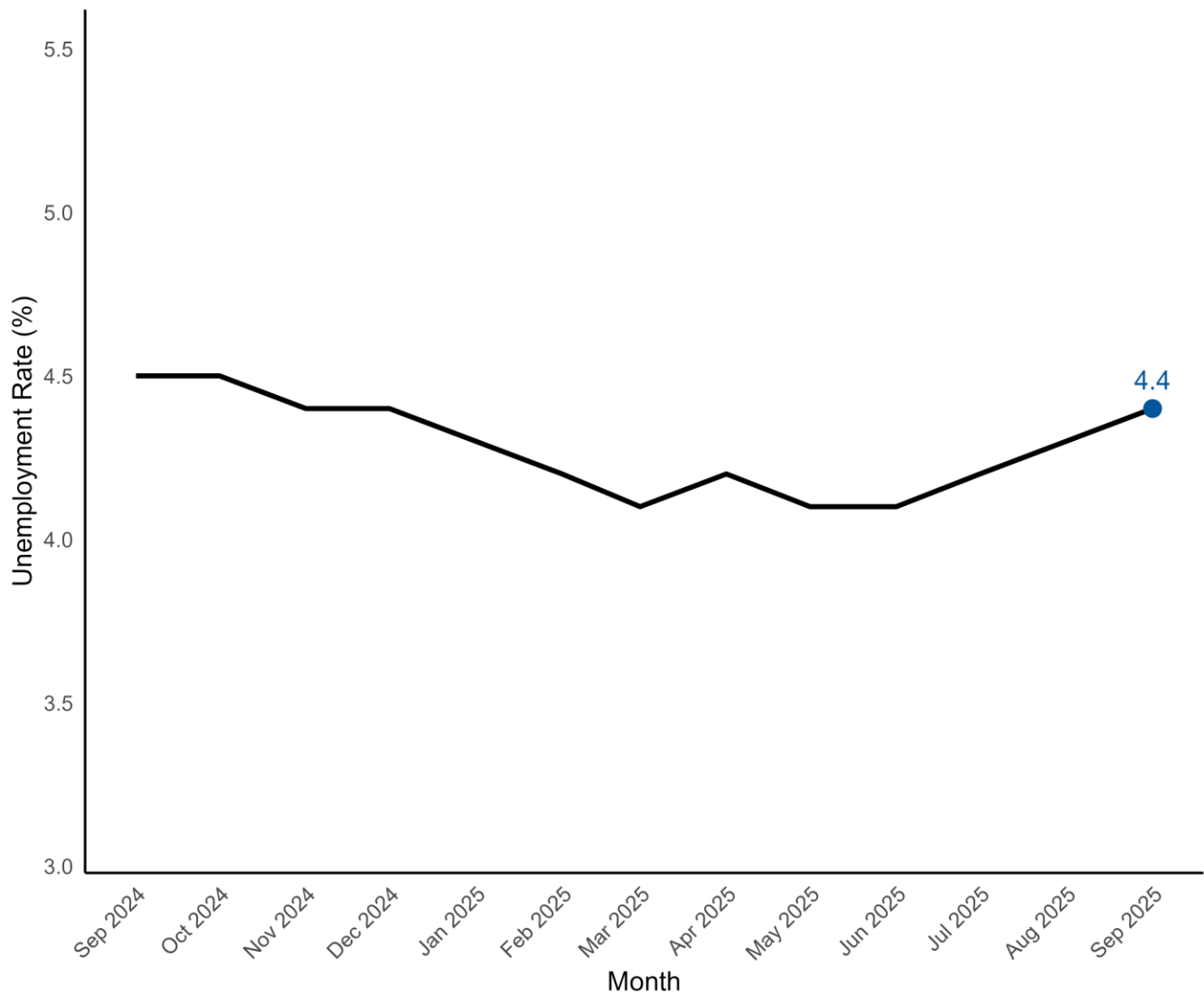
County	Labor Force	Employment	Unemp. Level	Unemp. Rate
Kershaw	32,952	31,434	1,518	4.6
Lancaster	51,361	48,838	2,523	4.9
Laurens	31,527	29,989	1,538	4.9
Lee	5,970	5,616	354	5.9
Lexington	158,487	152,251	6,236	3.9
McCormick	3,346	3,152	194	5.8
Marion	12,068	11,315	753	6.2
Marlboro	8,316	7,675	641	7.7
Newberry	18,510	17,682	828	4.5
Oconee	36,661	35,019	1,642	4.5
Orangeburg	34,655	32,372	2,283	6.6
Pickens	65,683	62,949	2,734	4.2
Richland	212,750	203,064	9,686	4.6
Saluda	8,995	8,624	371	4.1
Spartanburg	171,303	163,606	7,697	4.5
Sumter	43,116	40,758	2,358	5.5
Union	11,216	10,511	705	6.3
Williamsburg	10,725	9,845	880	8.2
York	159,558	152,479	7,079	4.4

Source: Bureau of Labor Statistics, Local Area Unemployment Statistics. Note: Current month's estimates are preliminary. All data are subject to revision. Unemp = Unemployment.

Figure 2. Monthly Unemployment, Past 12 Months, Seasonally Adjusted

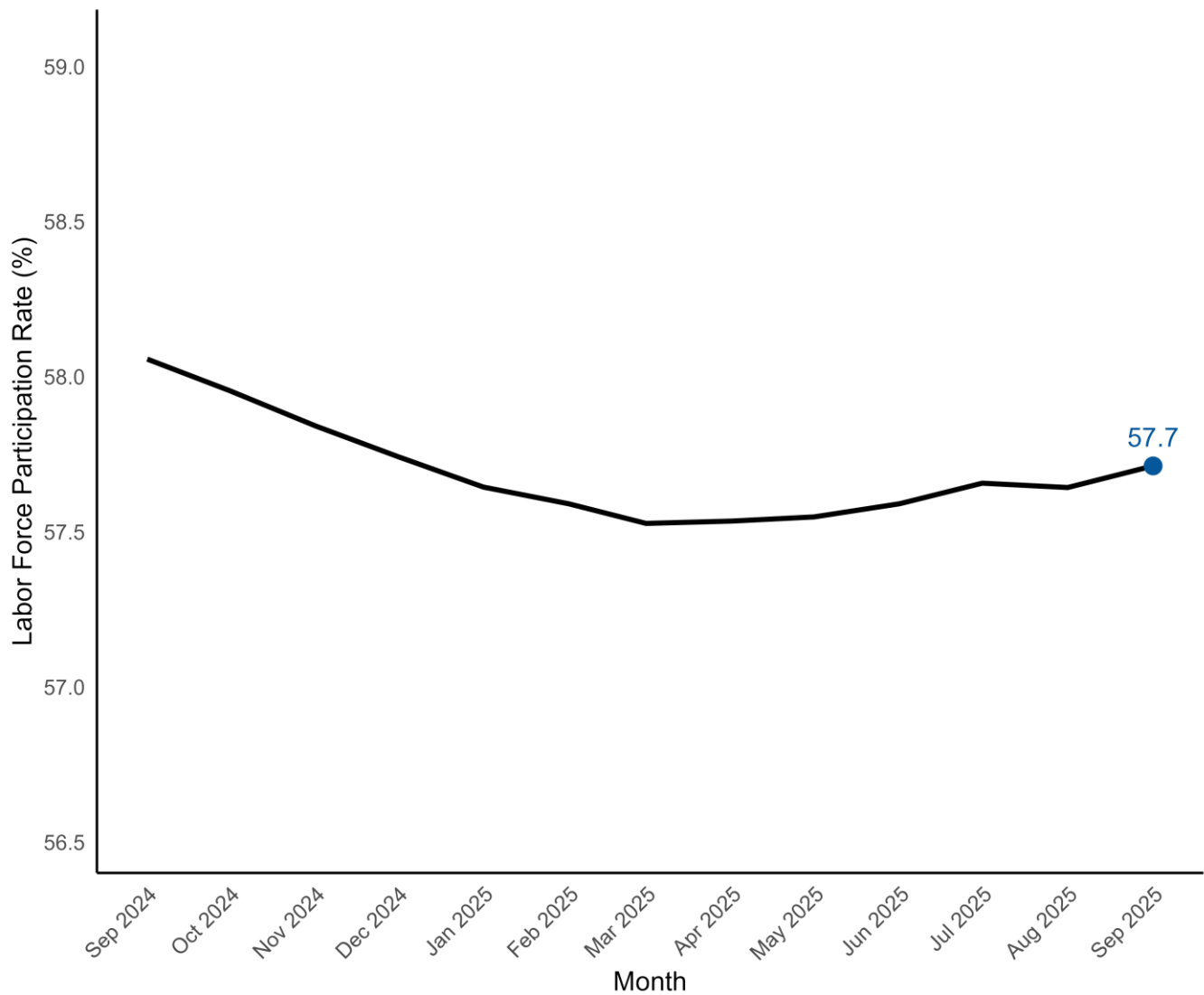
Source: Bureau of Labor Statistics, Local Area Unemployment Statistics.

Figure 3. Monthly Unemployment Rate, Past 12 months, Seasonally Adjusted



Source: Bureau of Labor Statistics, Local Area Unemployment Statistics.

Figure 4. Labor Force Participation, Past 12 Months, Seasonally Adjusted



Source: Bureau of Labor Statistics, Local Area Unemployment Statistics.

Table 5. NonFarm Payroll by Economic Sector, Seasonally Adjusted

Sector	September 2025	MoM Δ (#)	MoM Δ (%)	YoY Δ (#)	YoY Δ (%)
Total Nonfarm	2,420,800	-4,700	-0.2	+54,300	+2.3
Total Private	2,027,900	-3,300	-0.2	+49,500	+2.5
Goods Producing	388,500	-3,100	-0.8	+1,400	+0.4
Service-Providing	2,032,300	-1,600	-0.1	+52,900	+2.7
Private Service Providing	1,639,400	-200	-0.0	+48,100	+3.0
Mining and Logging	4,600	0	0.0	+200	+4.5
Mining, Logging, and Construction	127,400	-600	-0.5	+4,300	+3.5
Construction	122,800	-600	-0.5	+4,100	+3.5
Manufacturing	261,100	-2,500	-0.9	-2,900	-1.1
Durable Goods	158,700	-2,100	-1.3	-2,500	-1.6
Non-Durable Goods	102,400	-400	-0.4	-400	-0.4
Trade, Transportation, and Utilities	453,100	+2,400	+0.5	+5,900	+1.3
Wholesale Trade	85,100	+500	+0.6	+1,100	+1.3
Retail Trade	271,700	+1,800	+0.7	+2,300	+0.9
Transportation, Warehousing, and Utilities	96,300	+100	+0.1	+2,500	+2.7
Information	30,000	-200	-0.7	+1,500	+5.3
Financial Activities	126,700	-500	-0.4	+3,500	+2.8
Finance and Insurance	89,500	-100	-0.1	+2,100	+2.4
Real Estate and Rental and Leasing	37,200	-400	-1.1	+1,400	+3.9
Professional and Business Services	327,200	-1,600	-0.5	+12,500	+4.0
Professional, Scientific, and Technical	143,200	-400	-0.3	+7,400	+5.4
Management of Companies and Enterprises	25,500	0	0.0	+1,300	+5.4
Administrative and Support and Waste Management and Remediation Services	158,500	-1,200	-0.8	+3,800	+2.5
Private Education and Health Services	314,900	-300	-0.1	+10,600	+3.5
Private Educational Services	54,400	-400	-0.7	+1,600	+3.0
Health Care and Social Assistance	260,500	+100	+0.0	+9,000	+3.6

Table 5. NonFarm Payroll by Economic Sector, Seasonally Adjusted

Sector	September 2025	MoM Δ (#)	MoM Δ (%)	YoY Δ (#)	YoY Δ (%)
Leisure and Hospitality	294,300	+200	+0.1	+12,200	+4.3
Arts, Entertainment, and Recreation	41,100	+300	+0.7	+3,500	+9.3
Accommodation and Food Services	253,200	-100	-0.0	+8,700	+3.6
Other Services	93,200	-200	-0.2	+1,900	+2.1
Government	392,900	-1,400	-0.4	+4,800	+1.2
Federal Government	37,800	-100	-0.3	-600	-1.6
State Government	116,900	-300	-0.3	+2,100	+1.8
Local Government	238,200	-1,000	-0.4	+3,300	+1.4

Source: Bureau of Labor Statistics, Current Employment Statistics. Note: Current month's estimates are preliminary. All data are subject to revision.
 MoM = Month-over-Month. YoY = Year-over-Year. Δ (#) = Absolute Change. Δ (%) = Percent Change.

Table 6. Average Weekly Earnings by Metropolitan Statistical Area, Total Private, Not Seasonally Adjusted

Area	September 2025	MoM Δ (#)	MoM Δ (%)	YoY Δ (#)	YoY Δ (%)
Charleston-North Charleston	\$1,186.16	+\$24.12	+2.1	+\$24.75	+2.1
Columbia	\$1,016.70	+\$10.02	+1.0	-\$12.15	-1.2
Florence	\$819.41	+\$8.13	+1.0	+\$101.75	+14.2
Greenville-Anderson-Mauldin	\$1,201.12	+\$10.80	+0.9	+\$62.61	+5.5
Hilton Head Island-Bluffton-Beaufort	\$930.82	+\$17.34	+1.9	+\$112.76	+13.8
Myrtle Beach-Conway-North Myrtle Beach	\$831.29	+\$15.29	+1.9	-\$13.37	-1.6
Spartanburg	\$1,073.33	+\$4.27	+0.4	+\$32.97	+3.2
Sumter	\$968.44	+\$38.20	+4.1	+\$29.43	+3.1

Source: Bureau of Labor Statistics, Current Employment Statistics. Note: Current month's estimates are preliminary. All data are subject to revision. MoM = Month-over-Month. YoY = Year-over-Year. Δ (#) = Absolute Change. Δ (%) = Percent Change.

Table 7. Average Weekly Hours by Metropolitan Statistical Area, Total Private, Not Seasonally Adjusted

Area	September 2025	MoM Δ (#)	MoM Δ (%)	YoY Δ (#)	YoY Δ (%)
Charleston-North Charleston	33.9	0.1	+0.3	0.0	0.0
Columbia	33.4	-0.1	-0.3	-1.5	-4.3
Florence	33.5	0.4	+1.2	1.1	+3.4
Greenville-Anderson-Mauldin	35.4	0.1	+0.3	0.7	+2.0
Hilton Head Island-Bluffton-Beaufort	30.7	0.2	+0.7	-0.5	-1.6
Myrtle Beach-Conway-North Myrtle Beach	30.8	-1.2	-3.7	-0.6	-1.9
Spartanburg	35.4	0.6	+1.7	1.6	+4.7
Sumter	32.4	1.1	+3.5	-1.1	-3.3

Source: Bureau of Labor Statistics, Current Employment Statistics. Note: Current month's estimates are preliminary. All data are subject to revision. MoM = Month-over-Month. YoY = Year-over-Year. Δ (#) = Absolute Change. Δ (%) = Percent Change.

Table 8. Average Hourly Earnings by Metropolitan Statistical Area, Total Private, Not Seasonally Adjusted

Area	September 2025	MoM Δ (#)	MoM Δ (%)	YoY Δ (#)	YoY Δ (%)
Charleston-North Charleston	\$34.99	+\$0.61	+1.8	+\$0.73	+2.1
Columbia	\$30.44	+\$0.39	+1.3	+\$0.96	+3.3
Florence	\$24.46	−\$0.05	−0.2	+\$2.31	+10.4
Greenville-Anderson-Mauldin	\$33.93	+\$0.21	+0.6	+\$1.12	+3.4
Hilton Head Island-Bluffton-Beaufort	\$30.32	+\$0.37	+1.2	+\$4.10	+15.6
Myrtle Beach-Conway-North Myrtle Beach	\$26.99	+\$1.49	+5.8	+\$0.09	+0.3
Spartanburg	\$30.32	−\$0.40	−1.3	−\$0.46	−1.5
Sumter	\$29.89	+\$0.17	+0.6	+\$1.86	+6.6

Source: Bureau of Labor Statistics, Current Employment Statistics. Note: Current month's estimates are preliminary. All data are subject to revision. MoM = Month-over-Month. YoY = Year-over-Year. Δ (#) = Absolute Change. Δ (%) = Percent Change.

Table 9. Average Weekly Earnings by Industry, Statewide, Not Seasonally Adjusted

Industry	September 2025	MoM Δ (#)	MoM Δ (%)	YoY Δ (#)	YoY Δ (%)
Total Private	\$1,106.95	+\$17.43	+1.6	+\$49.95	+4.7
Goods Producing	\$1,433.07	+\$37.22	+2.7	+\$84.59	+6.3
Construction	\$1,374.24	+\$31.69	+2.4	+\$28.22	+2.1
Manufacturing	\$1,451.12	+\$45.04	+3.2	+\$79.88	+5.8
Private Service Providing	\$1,031.02	+\$13.25	+1.3	+\$45.20	+4.6
Trade, Transportation, and Utilities	\$984.46	+\$3.73	+0.4	+\$72.55	+8.0
Financial Activities	\$1,303.75	-\$35.00	-2.6	-\$17.97	-1.4
Professional and Business Services	\$1,472.94	+\$27.14	+1.9	+\$133.25	+9.9
Private Education and Health Services	\$998.16	+\$9.98	+1.0	-\$38.92	-3.8
Leisure and Hospitality	\$492.77	-\$4.05	-0.8	+\$27.22	+5.8
Other Services	\$957.63	+\$9.28	+1.0	-\$48.38	-4.8

Source: Bureau of Labor Statistics, Current Employment Statistics. Note: Current month's estimates are preliminary. All data are subject to revision. MoM = Month-over-Month. YoY = Year-over-Year. Δ (#) = Absolute Change. Δ (%) = Percent Change.

Table 10. Average Weekly Hours by Industry, Statewide, Not Seasonally Adjusted

Industry	September 2025	MoM Δ (#)	MoM Δ (%)	YoY Δ (#)	YoY Δ (%)
Total Private	33.8	0.1	+0.3	-0.1	-0.3
Goods Producing	40.3	0.6	+1.5	1.1	+2.8
Construction	40.9	0.8	+2.0	0.0	0.0
Manufacturing	40.5	0.6	+1.5	0.8	+2.0
Private Service Providing	32.3	0.0	0.0	-0.3	-0.9
Trade, Transportation, and Utilities	33.9	0.0	0.0	0.8	+2.4
Financial Activities	35.0	-0.7	-2.0	-2.2	-5.9
Professional and Business Services	37.7	0.0	0.0	0.1	+0.3
Private Education and Health Services	31.3	0.4	+1.3	-1.2	-3.7
Leisure and Hospitality	24.7	-0.7	-2.8	0.3	+1.2
Other Services	32.2	-0.3	-0.9	-1.2	-3.6

Source: Bureau of Labor Statistics, Current Employment Statistics. Note: Current month's estimates are preliminary. All data are subject to revision. MoM = Month-over-Month. YoY = Year-over-Year. Δ (#) = Absolute Change. Δ (%) = Percent Change.

Table 11. Average Hourly Earnings by Industry, Statewide, Not Seasonally Adjusted

Industry	September 2025	MoM Δ (#)	MoM Δ (%)	YoY Δ (#)	YoY Δ (%)
Total Private	\$32.75	+\$0.42	+1.3	+\$1.57	+5.0
Goods Producing	\$35.56	+\$0.40	+1.1	+\$1.16	+3.4
Construction	\$33.60	+\$0.12	+0.4	+\$0.69	+2.1
Manufacturing	\$35.83	+\$0.59	+1.7	+\$1.29	+3.7
Private Service Providing	\$31.92	+\$0.41	+1.3	+\$1.68	+5.6
Trade, Transportation, and Utilities	\$29.04	+\$0.11	+0.4	+\$1.49	+5.4
Financial Activities	\$37.25	−\$0.25	−0.7	+\$1.72	+4.8
Professional and Business Services	\$39.07	+\$0.72	+1.9	+\$3.44	+9.7
Private Education and Health Services	\$31.89	−\$0.09	−0.3	−\$0.02	−0.1
Leisure and Hospitality	\$19.95	+\$0.39	+2.0	+\$0.87	+4.6
Other Services	\$29.74	+\$0.56	+1.9	−\$0.38	−1.3

Source: Bureau of Labor Statistics, Current Employment Statistics. Note: Current month's estimates are preliminary. All data are subject to revision. YoY = Year-over-Year. Δ (#) = Absolute Change. Δ (%) = Percent Change.

Table 12. Charleston-North Charleston MSA: Nonfarm Payroll by Economic Sector, NSA

Sector	September 2025	MoM Δ (#)	MoM Δ (%)	YoY Δ (#)	YoY Δ (%)
Total Nonfarm	433,400	-4,200	-1.0	+9,200	+2.2
Total Private	360,900	-5,000	-1.4	+7,600	+2.2
Goods Producing	59,400	-700	-1.2	+300	+0.5
Service-Providing	374,000	-3,500	-0.9	+8,900	+2.4
Private Service Providing	301,500	-4,300	-1.4	+7,300	+2.5
Mining, Logging, and Construction	25,200	-200	-0.8	+1,100	+4.6
Manufacturing	34,200	-500	-1.4	-800	-2.3
Trade, Transportation, and Utilities	77,600	0	0.0	+1,200	+1.6
Wholesale Trade	13,000	0	0.0	+100	+0.8
Retail Trade	45,400	0	0.0	+700	+1.6
General Merchandise Stores	8,400	-100	-1.2	+100	+1.2
Transportation, Warehousing, and Utilities	19,200	0	0.0	+400	+2.1
Information	8,100	-100	-1.2	+300	+3.8
Financial Activities	22,600	-600	-2.6	+1,400	+6.6
Professional and Business Services	69,600	-700	-1.0	+1,200	+1.8
Administrative and Support and Waste Management	29,400	-200	-0.7	+700	+2.4
Private Education and Health Services	51,200	+200	+0.4	+1,500	+3.0
Leisure and Hospitality	55,700	-3,000	-5.1	+1,300	+2.4
Accommodation and Food Services	48,300	-2,600	-5.1	+1,100	+2.3
Food Services and Drinking Places	40,300	-1,500	-3.6	+1,500	+3.9
Other Services	16,700	-100	-0.6	+400	+2.5
Government	72,500	+800	+1.1	+1,600	+2.3
Federal Government	12,000	-100	-0.8	-300	-2.4
State Government	30,000	+800	+2.7	+2,000	+7.1
Local Government	30,500	+100	+0.3	-100	-0.3

Source: Bureau of Labor Statistics, Current Employment Statistics. Note: Current month's estimates are preliminary. All data are subject to revision. MSA = Metropolitan Statistical Area. NSA = Not Seasonally Adjusted. YoY = Year-over-Year. Δ (#) = Absolute Change. Δ (%) = Percent Change.

Table 13. Columbia MSA: Nonfarm Payroll by Economic Sector, NSA

Sector	September 2025	MoM Δ (#)	MoM Δ (%)	YoY Δ (#)	YoY Δ (%)
Total Nonfarm	438,600	-1,700	-0.4	+4,900	+1.1
Total Private	353,700	-3,300	-0.9	+5,500	+1.6
Goods Producing	51,000	-800	-1.5	+200	+0.4
Service-Providing	387,600	-900	-0.2	+4,700	+1.2
Private Service Providing	302,700	-2,500	-0.8	+5,300	+1.8
Mining, Logging, and Construction	19,300	-400	-2.0	+900	+4.9
Manufacturing	31,700	-400	-1.2	-700	-2.2
Trade, Transportation, and Utilities	78,100	0	0.0	+500	+0.6
Wholesale Trade	16,200	-100	-0.6	0	0.0
Retail Trade	44,600	-100	-0.2	+200	+0.5
Transportation, Warehousing, and Utilities	17,300	+200	+1.2	+300	+1.8
Information	5,100	-100	-1.9	+300	+6.2
Financial Activities	36,400	-200	-0.5	+1,300	+3.7
Credit Intermediation and Related Activities including Monetary Authorities - Central Bank	6,400	-100	-1.5	-100	-1.5
Professional and Business Services	59,700	-400	-0.7	+1,100	+1.9
Administrative and Support and Waste Management	31,200	-600	-1.9	+1,200	+4.0
Private Education and Health Services	61,400	-600	-1.0	+400	+0.7
Leisure and Hospitality	43,300	-1,000	-2.3	+1,200	+2.9
Food Services and Drinking Places	35,700	-900	-2.5	+600	+1.7
Other Services	18,700	-200	-1.1	+500	+2.7
Government	84,900	+1,600	+1.9	-600	-0.7
Federal Government	12,100	-200	-1.6	-400	-3.2
State Government	36,200	+2,000	+5.8	0	0.0
Local Government	36,600	-200	-0.5	-200	-0.5

Source: Bureau of Labor Statistics, Current Employment Statistics. Note: Current month's estimates are preliminary. All data are subject to revision. MSA = Metropolitan Statistical Area. NSA = Not Seasonally Adjusted. YoY = Year-over-Year. Δ (#) = Absolute Change. Δ (%) = Percent Change.

Table 14. Greenville-Anderson-Mauldin MSA: Nonfarm Payroll by Economic Sector, NSA

Sector	September 2025	MoM Δ (#)	MoM Δ (%)	YoY Δ (#)	YoY Δ (%)
Total Nonfarm	476,500	-1,200	-0.3	+3,800	+0.8
Total Private	416,700	-3,100	-0.7	+5,800	+1.4
Goods Producing	85,800	-1,000	-1.2	+1,000	+1.2
Service-Providing	390,700	-200	-0.1	+2,800	+0.7
Private Service Providing	330,900	-2,100	-0.6	+4,800	+1.5
Mining, Logging, and Construction	25,400	-100	-0.4	+1,300	+5.4
Manufacturing	60,400	-900	-1.5	-300	-0.5
Trade, Transportation, and Utilities	87,000	0	0.0	+900	+1.0
Wholesale Trade	21,900	0	0.0	+100	+0.5
Retail Trade	49,700	0	0.0	+600	+1.2
Transportation, Warehousing, and Utilities	15,400	0	0.0	+200	+1.3
Information	6,200	-200	-3.1	+200	+3.3
Financial Activities	23,900	-400	-1.6	+500	+2.1
Professional and Business Services	77,600	-300	-0.4	+1,500	+2.0
Professional, Scientific, and Technical Services	32,000	-500	-1.5	+500	+1.6
Management of Companies and Enterprises	7,100	-100	-1.4	+300	+4.4
Administrative and Support and Waste Management	38,500	+300	+0.8	+700	+1.9
Private Education and Health Services	68,300	+1,000	+1.5	+2,000	+3.0
Educational Services	16,400	+1,200	+7.9	+900	+5.8
Health Care and Social Assistance	51,900	-200	-0.4	+1,100	+2.2
Leisure and Hospitality	50,300	-2,000	-3.8	-800	-1.6
Other Services	17,600	-200	-1.1	+500	+2.9
Government	59,800	+1,900	+3.3	-2,000	-3.2
Federal Government	3,000	0	0.0	-100	-3.2
State Government	11,600	+1,600	+16.0	-1,900	-14.1
Local Government	45,200	+300	+0.7	0	0.0

Source: Bureau of Labor Statistics, Current Employment Statistics. Note: Current month's estimates are preliminary. All data are subject to revision. MSA = Metropolitan Statistical Area. NSA = Not Seasonally Adjusted. YoY = Year-over-Year. Δ (#) = Absolute Change. Δ (%) = Percent Change.

Table 15. Myrtle Beach-Conway-North Myrtle Beach MSA: Nonfarm Payroll by Economic Sector, NSA

Sector	September 2025	MoM Δ (#)	MoM Δ (%)	YoY Δ (#)	YoY Δ (%)
Total Nonfarm	162,100	-4,400	-2.6	+6,900	+4.4
Total Private	140,800	-5,100	-3.5	+6,600	+4.9
Goods Producing	13,300	0	0.0	+300	+2.3
Service-Providing	148,800	-4,400	-2.9	+6,600	+4.6
Private Service Providing	127,500	-5,100	-3.8	+6,300	+5.2
Mining, Logging, and Construction	9,800	0	0.0	+300	+3.2
Manufacturing	3,500	0	0.0	0	0.0
Trade, Transportation, and Utilities	34,000	-100	-0.3	+800	+2.4
Wholesale Trade	3,300	0	0.0	+100	+3.1
Retail Trade	27,300	-100	-0.4	+600	+2.2
Transportation, Warehousing, and Utilities	3,400	0	0.0	+100	+3.0
Information	2,000	0	0.0	0	0.0
Financial Activities	8,800	-200	-2.2	-100	-1.1
Professional and Business Services	16,900	-300	-1.7	+100	+0.6
Private Education and Health Services	18,300	+100	+0.5	+900	+5.2
Leisure and Hospitality	41,600	-4,600	-10.0	+4,500	+12.1
Accommodation and Food Services	34,700	-3,500	-9.2	+2,900	+9.1
Food Services and Drinking Places	27,100	-2,500	-8.4	+2,400	+9.7
Other Services	5,900	0	0.0	+100	+1.7
Government	21,300	+700	+3.4	+300	+1.4
Federal Government	1,100	0	0.0	+100	+10.0
State Government	4,400	+100	+2.3	0	0.0
Local Government	15,800	+600	+3.9	+200	+1.3

Source: Bureau of Labor Statistics, Current Employment Statistics. Note: Current month's estimates are preliminary. All data are subject to revision. MSA = Metropolitan Statistical Area. NSA = Not Seasonally Adjusted. YoY = Year-over-Year. Δ (#) = Absolute Change. Δ (%) = Percent Change.

Table 16. Spartanburg MSA: Nonfarm Payroll by Economic Sector, NSA

Sector	September 2025	MoM Δ (#)	MoM Δ (%)	YoY Δ (#)	YoY Δ (%)
Total Nonfarm	181,300	+700	+0.4	+3,900	+2.2
Total Private	149,900	-600	-0.4	+2,800	+1.9
Goods Producing	49,200	-400	-0.8	+900	+1.9
Service-Providing	132,100	+1,100	+0.8	+3,000	+2.3
Private Service Providing	100,700	-200	-0.2	+1,900	+1.9
Mining, Logging, and Construction	8,500	-100	-1.2	+400	+4.9
Manufacturing	40,700	-300	-0.7	+500	+1.2
Durable Goods	28,500	-300	-1.0	+500	+1.8
Non-Durable Goods	12,200	0	0.0	0	0.0
Trade, Transportation, and Utilities	37,000	+300	+0.8	+300	+0.8
Wholesale Trade	7,500	+100	+1.4	+100	+1.4
Retail Trade	19,000	+200	+1.1	+100	+0.5
Transportation, Warehousing, and Utilities	10,500	0	0.0	+100	+1.0
Information	900	0	0.0	0	0.0
Financial Activities	5,700	0	0.0	+100	+1.8
Professional and Business Services	17,200	-200	-1.1	+200	+1.2
Private Education and Health Services	17,800	+100	+0.6	+700	+4.1
Leisure and Hospitality	15,500	-400	-2.5	+300	+2.0
Other Services	6,600	0	0.0	+300	+4.8
Government	31,400	+1,300	+4.3	+1,100	+3.6
Federal Government	700	0	0.0	0	0.0
State Government	4,700	+500	+11.9	+100	+2.2
Local Government	26,000	+800	+3.2	+1,000	+4.0

Source: Bureau of Labor Statistics, Current Employment Statistics. Note: Current month's estimates are preliminary. All data are subject to revision. MSA = Metropolitan Statistical Area. NSA = Not Seasonally Adjusted. YoY = Year-over-Year. Δ (#) = Absolute Change. Δ (%) = Percent Change.

Table 17. Florence MSA: Nonfarm Payroll by Economic Sector, NSA

Sector	September 2025	MoM Δ (#)	MoM Δ (%)	YoY Δ (#)	YoY Δ (%)
Total Nonfarm	98,800	-600	-0.6	+2,300	+2.4
Total Private	79,700	-900	-1.1	+1,900	+2.4
Goods Producing	15,600	-300	-1.9	0	0.0
Service-Providing	83,200	-300	-0.4	+2,300	+2.8
Private Service Providing	64,100	-600	-0.9	+1,900	+3.1
Trade, Transportation, and Utilities	20,300	0	0.0	0	0.0
Government	19,100	+300	+1.6	+400	+2.1
Federal Government	700	0	0.0	0	0.0
State Government	5,400	+200	+3.8	+200	+3.8
Local Government	13,000	+100	+0.8	+200	+1.6

Source: Bureau of Labor Statistics, Current Employment Statistics. Note: Current month's estimates are preliminary. All data are subject to revision. MSA = Metropolitan Statistical Area. NSA = Not Seasonally Adjusted. YoY = Year-over-Year. Δ (#) = Absolute Change. Δ (%) = Percent Change.

Table 18. Hilton Head Island-Bluffton-Beaufort MSA: Nonfarm Payroll by Economic Sector, NSA

Sector	September 2025	MoM Δ (#)	MoM Δ (%)	YoY Δ (#)	YoY Δ (%)
Total Nonfarm	90,700	−300	−0.3	+1,800	+2.0
Total Private	77,900	−300	−0.4	+1,600	+2.1
Goods Producing	7,500	−200	−2.6	0	0.0
Service-Providing	83,200	−100	−0.1	+1,800	+2.2
Private Service Providing	70,400	−100	−0.1	+1,600	+2.3
Government	12,800	0	0.0	+200	+1.6

Source: Bureau of Labor Statistics, Current Employment Statistics. Note: Current month's estimates are preliminary. All data are subject to revision. MSA = Metropolitan Statistical Area. NSA = Not Seasonally Adjusted. YoY = Year-over-Year. Δ (#) = Absolute Change. Δ (%) = Percent Change.

Table 19. Sumter MSA: Nonfarm Payroll by Economic Sector, NSA

Sector	September 2025	MoM Δ (#)	MoM Δ (%)	YoY Δ (#)	YoY Δ (%)
Total Nonfarm	39,000	−100	−0.3	+1,700	+4.6
Total Private	32,900	−200	−0.6	+1,500	+4.8
Goods Producing	9,200	−100	−1.1	+600	+7.0
Service-Providing	29,800	0	0.0	+1,100	+3.8
Private Service Providing	23,700	−100	−0.4	+900	+3.9
Manufacturing	6,300	0	0.0	+300	+5.0
Government	6,100	+100	+1.7	+200	+3.4
Federal Government	1,300	0	0.0	+100	+8.3
State Government	1,400	+100	+7.7	0	0.0
Local Government	3,400	0	0.0	+100	+3.0

Source: Bureau of Labor Statistics, Current Employment Statistics. Note: Current month's estimates are preliminary. All data are subject to revision. MSA = Metropolitan Statistical Area. NSA = Not Seasonally Adjusted. YoY = Year-over-Year. Δ (#) = Absolute Change. Δ (%) = Percent Change.

For more information on South Carolina's LMI division and our funding sources, visit:

<https://lmi.sc.gov/About-Us/>.